

**Inline Series 6000**

Labeling System

Inline Series

6000

# Inline Ser

The Label-Aire® **Inline Series 6000** labeling system is designed to be very easy to configure while also making labeling easier and faster... making you more profitable.

The Inline Series 6000's long list of optional features allows you to easily build a system to meet your specific labeling requirements. Need a simple wrap conveyor system? Or instead, a high-speed front/back system with dual feedscrews and a top trap hold down? With the Inline Series 6000, you can have it your way.

The versatile Inline 6000 is an open frame labeling system that can be outfitted with Label-Aire's full range of New Generation 3100 Series applicators (wipe-on, air-blow, or tamp-blow) and features a delrin chain conveyor in lengths of 6 feet to 12 feet (1,829 mm to 3,658 mm) with a choice of 4.5 inch (114 mm) or 6.0 inch (152 mm) conveyor widths.

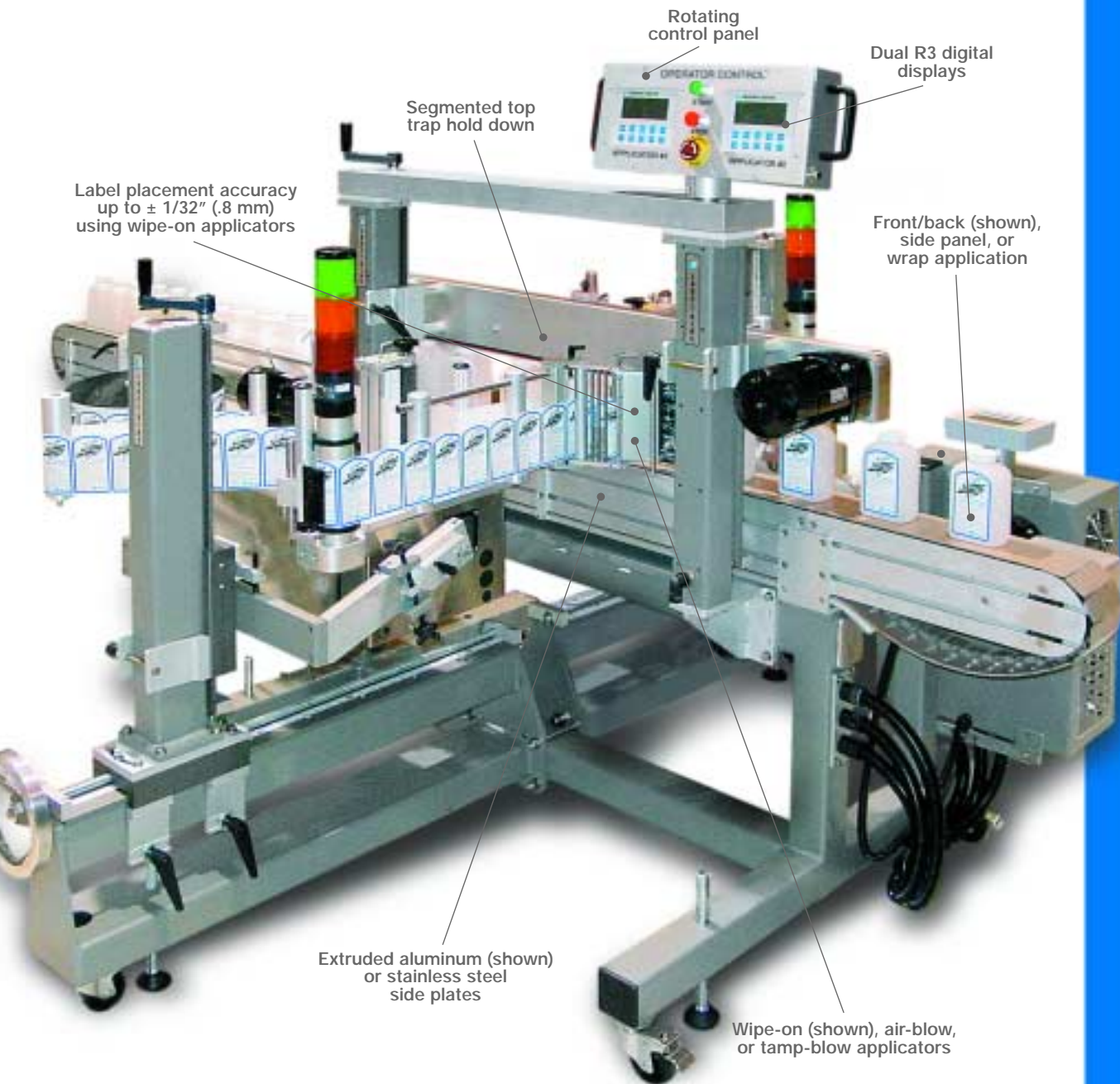
The 6000's options include extruded aluminum or stainless steel side plates, speeds up to 1,200 inches (3,048 cm) per minute with the optional Variable Frequency Drive (VFD), user-friendly digital/PLC controls, top trap hold down, single or dual feedscrews with soft start, powered or non-powered impressors for secondary wipe down, metering wheel to aid in product separation, Automatic Speed Following (ASF) for product surface profiling, chain aligner, squeegee wipe-downs, and wrap belt.

Put the latest in modular labeling technology to work for you all day, every day. The Inline Series 6000 is built to meticulous quality standards and designed to meet your most difficult labeling requirements.

Inline Series 6000 Advanced Features	
<b>Rotating control panel</b>	Dual keypad/R3 digital displays allow you to easily control applicators for easy set-up and adjustments.
<b>Label-Aire New Generation 3100 Series Primary Applicators</b>	For precise and reliable labeling with easy set-up and change-overs and quicker line speeds. Select from four advanced models: 3115 Wipe-On, 3125 Wipe-On, 3111 Air-Blow, or 3114 Tamp-Blow.
<b>Automatic Speed Following (ASF)</b>	Labels are accurately applied even through extreme changes in product line speed.
<b>Optional Single or Dual clutched feedscrews</b>	Cleverly engineered for quicker change-overs. "Soft start" capability is designed to maintain product surge.
<b>Optional Variable Frequency Drive (VFD)</b>	Allows speeds up to 2,000 inches (5,080 cm) per minute for more demanding applications.

beverage, cd / dvd, coupon / promotional, dairy, direct mail, durable goods, food, health & beauty, nutraceutical, pharmaceutical, tamper-evident labeling

# ies 6000



Rotating control panel

Dual R3 digital displays

Segmented top trap hold down

Label placement accuracy up to  $\pm 1/32"$  (.8 mm) using wipe-on applicators

Front/back (shown), side panel, or wrap application

Extruded aluminum (shown) or stainless steel side plates

Wipe-on (shown), air-blow, or tamp-blow applicators

# Inline Series 6000 Specifications

## Dimensions:

Height: 63.9" (1,623 mm)  
 Length: 120" (3,048 mm)  
 Width: 84.8" (2,154 mm)

## Weight:

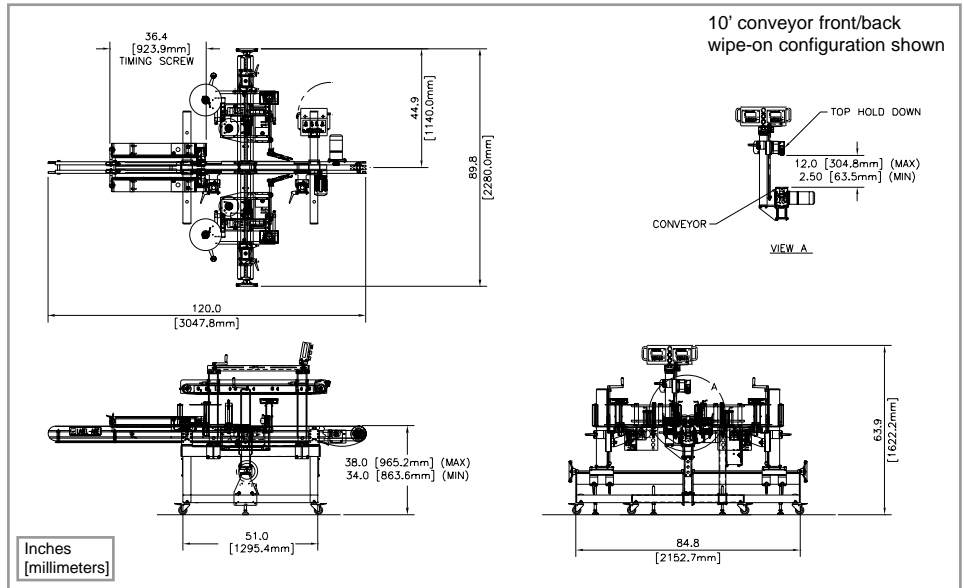
Approx. 1,000 lbs. (454 kg)

## Electrical:

120 Volts AC 60 Hz 20 Amps.  
 220 Volts AC 50 Hz optional (CE)

## Air:

4 cfm at 90 psi to 100 psi  
 required for air-blow and  
 tamp-blow applications



Conveyor:	6' End-to-end	8' End-to-end	10' End-to-end	12' End-to-end
Length	(Wrap only)	(Front/Back or Wrap)	(Front/Back and/or Wrap)	(Front/Back and/or Wrap)
Width (Extrud. Alum. or SS Side Plates)	4.5" or 6.0"	4.5" or 6.0"	4.5" or 6.0"	4.5" or 6.0"
Height	36" ± 2"	36" ± 2"	36" ± 2"	36" ± 2"
Main Drive:	DC Motor	VFD	VFD/PLC	VFD/PLC
Line speed	Up to 1000"/min.	Up to 1200"/min	Up to 1200"/min	Up to 1200"/min
Applicator:	Label-Aire 3100 Series Primary Applicators	Label-Aire 3100 Series Primary Applicators	Label-Aire 3100 Series Primary Applicators	Label-Aire 3100 Series Primary Applicators
Operator Interface:	Electronic Box/ Applicators Analog	Electronic Box/ Revolving Dual Keypad Digital/PLC	Electronic Box/ Revolving Dual Keypad Digital/PLC	Electronic Box/ Revolving Dual Keypad Digital/PLC
Control				
Top Hold Down:	N/A	~24", Linatex	~24" or 50.5", Linatex	~24" or 50.5", Linatex
Vertical Adjustment	N/A	12"	12"	12"
Belt Width	N/A	1"	1"	1"
Drive	N/A	VFD	VFD	VFD
Feedscrew:	N/A	Single or Dual	Single or Dual	Single or Dual
Length Options	N/A	24.0"	30.0"	30.0"
Drive	N/A	VFD	VFD	VFD
Soft Start	N/A	Yes	Yes	Yes
Metering Wheel (Optional):	Single	Single	Single	Single
Wheel Diameter	6.0"	6.0"	6.0"	6.0"
Drive	DC Motor	DC Motor	DC Motor	DC Motor
ASF (Optional):	N/A	Yes	Yes	Yes
Chain Aligner (Optional):	N/A	DC Motor	DC Motor	DC Motor
Drive				
Wrap Belt (Optional):	(4.0" or 7.0") Wide x 12.0" Long DC Motor	(4.0" or 7.0") Wide x 12.0" Long VFD	(4.0" or 7.0") Wide x 12.0" Long VFD	(4.0" or 7.0") Wide x 12.0" Long VFD
Drive				
Secondary Impressors (Optional):	DC Speed Control Available	DC Speed Control Available	DC Speed Control Available	DC Speed Control Available
Powered				
Non-Powered				

Consult factory for additional options.

ASF = Automatic Speed Following SS = Stainless Steel VFD = Variable Frequency Drive



Distributed by:



## Headquarters

550 Burning Tree Road  
 Fullerton, CA 92833 USA

o 714.441.0700  
 f 714.526.0300  
 e info@label-aire.com  
 w www.label-aire.com

## Europe

Sjaellandsvej 27A  
 DK-9500 Hobro, Denmark

o +45 9657 0063  
 f +45 9657 0064  
 e info@label-aire.com  
 w www.label-aire.com