

COMPACTLINE 2.0

INKJET
Product information

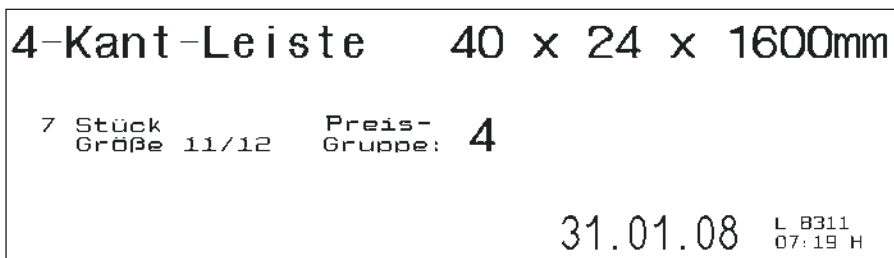
Perfect digital printing for high-definition marking



COMPACTLINE 2.0

COMPACTLINE 2.0: SIZE LIKE A MOBILE PHONE

In this device the printing technology, controller and keyboard are combined in the smallest space. With licensed ink-jet technology from Hewlett Packard the COMPACTLINE can print packages with absorbent surfaces directly on the packing line. The system can handle a multitude of coding tasks with a maximum print height of approx. 4.5 mm. Amongst these tasks are production- and shelf life data, sequential numbering, date, time and lots more. The 4-line, graphics-capable LCD display with combined membrane keyboard permits user-friendly text and data entries.



SUMMARY OF THE MOST IMPORTANT FEATURES:

- Alpha-numeric texts with various fonts and sizes
- Graphics mode
- Automatic functions: Date, offset date, time, counter
- Integrated PE-sensors to trigger printing and for speed measurement
- Maintenance-free printer function through the use of HP ink cartridges which have been tried and tested a million times over.

Mark-O-Print GmbH

COMPACTLINE 2.0

INKJET

Product information

PRINTING TECHNOLOGY

The printing cartridge is inserted into the printer in one single hand movement and the system is then immediately ready to start.

DESCRIPTION OF PRINTING FUNCTION

The ink is in the ink channels of the printing cartridge, whereby the viscosity of the ink prevents it from running out. A heating element is fitted behind each nozzle opening which generates a vapour bubble in milliseconds when a short-term current is applied (2µs). This vapour bubble gives the ink between the heating element and the nozzle opening an impulse. This then „shoots“ a defined amount of ink from the opening and while it is reforming pulls after it a corresponding amount of ink from the storage tank – the process can then start all over again. Font sizes of between 1.5 and approx. 4.5 mm can be generated by means of various character matrix configurations.

DATA INPUT

Printing texts and data are entered via the keyboard of the unit and can be seen on the LCD display. Operator control is menu-guided and self-explanatory.

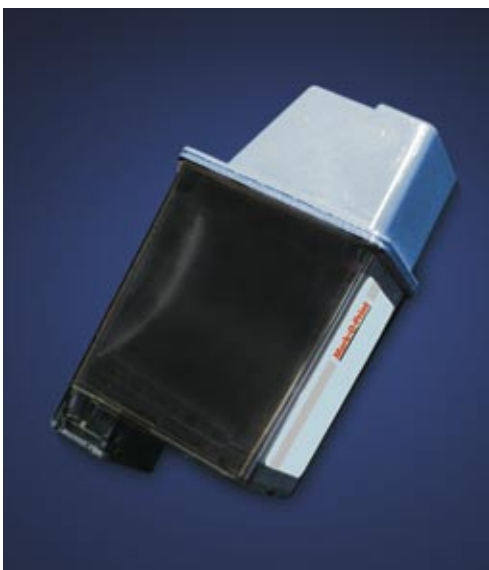


4-Kant-Leiste 40 x 24 x 1600mm

Print sample 1:1

PRINTING INKS

The printing cartridges (capacity of 40 ml) contain environmentally-friendly inks based on water.



Printing cartridge

AUTOMATIC FUNCTIONS

Date, time and counting can be inserted as automatic functions – even while the text is being formatted. This data is continuously updated while printing continues.

OTHER SPECIAL FEATURES

PE-sensors for starting printing and the automatic detection of printing speed and direction are integrated into the body of the unit and are part of the basic scope of supply.

MAINTENANCE AND CARE

Less than one minute is all that is required for the daily maintenance and care of the printing cartridge. After the ink supply has been used up the printing cartridge is exchanged and then a factory-fresh printing head is again ready for operation.

SPECIFICATION

- NUMBER OF PRINTHEADS:
Up to 99 networkable
- PRINT DIRECTION:
L/R or R/L, from the side and from above
- PRINTHEAD DISTANCE:
Max. 5 mm to product
- SPEED:
180 dpi: 50 m/min.
200 dpi: 45 m/min.
300 dpi: 30 m/min.
450 dpi: 20 m/min.
- TEXT MEMORY:
90 messages
- FONTS:
Alphanumeric fonts
26 pt (1-line)
font height approx. 4,5 mm
12 pt (2-lines)
font height approx. 2,0 mm
8 pt (3-lines)
font height approx. 1,5 mm
- AUTOMATIC FUNCTIONS:
Date, time, sequential numbering
- INK:
Waterbased inks for printing on absorbent substrates, colour: black
- INK CONSUMPTION:
Automatic calculation of ink consumption / display for current print job
- INTERFACES:
RS 232
(optional RS 422, Ethernet)
- INPUTS:
Photocell; Shaft Encoder,
(optional as an external supply)
- OUTPUTS:
OK, warning, alarm
- POWER SUPPLY:
Primary: 90 – 240 VAC,
50 – 60 Hz, 6 W
Secondary: 24 VDC
- ENVIRONMENT:
Room temperature 5 – 45°C,
relative humidity 10 – 90 % non-condensing