



## STAGENOW

### The easy way to stage Zebra Technologies' Android-based mobile computers

If you need to deploy Zebra Technologies Android mobile devices in your enterprise, the first step is staging — preparing the devices for use. You could use existing IT staff or hire personnel to manually initialize your settings and applications — but not only is this approach costly and time consuming, it is prone to errors which can impact the worker experience, productivity and enterprise security. You could use your centralized Mobile Device Management (MDM) solution — but first you'll need an online connection to the MDM that can add to your costs. In addition, your MDM may not be capable of executing all of the settings you require. Zebra Technologies StageNow solves these challenges, allowing any size organization to easily stage a handful or hundreds of Android devices with a quick scan of a bar code or tap on an NFC tag. And with StageNow's incredibly easy Wizard-based tool, even complex staging profiles are easy to create.

#### Simple wizard-driven staging tool

StageNow was thoughtfully designed to make device staging as easy as possible, with a minimal learning curve. Creating a staging profile with all the configurations, settings and applications your devices require is as easy as choosing selections from drop down boxes and clicking on buttons — all without any coding.

#### Automate staging with the scan of a bar code or tap on an NFC tag

Support for two modalities allows you to utilize the features in your Zebra mobile computers to maximize staging simplicity. Whether you opt to print and scan a bar code or simply place devices close to an NFC tag, devices will automatically configure themselves — eliminating error-prone, time consuming and costly manual staging procedures.

#### Comprehensive functionality

This must-have staging solution is ideal for complex and privileged enterprise device settings — from connecting to a secure Wi-Fi network and setting the device language and inputs to installing certificates and line of business applications or updating the operating system.

#### Powerful Android Enterprise security configuration options

When it comes to controlling security on Android devices, StageNow shines. You can manage device security for wireless networks — including Wi-Fi, cellular, GPS and NFC — plus USB ports, SD cards, cameras, browsers, applications via white and black lists and much more.

#### Easy installation

Compatible with any Windows 7 or newer device, the self-contained installer includes a built-in database and server that require

no input, setup or configuration from the IT administrator. And the small runtime footprint makes it easy to enable your branch locations with a self contained staging solution — or even take the tool with you on the road.

#### Simplify complex staging with Profiles

Support for Profiles allows you to bundle all of your settings with all of your applications, making it easy to simplify complex staging procedures that involve many settings and many files.

#### Scalable to meet the needs of your deployment

StageNow is efficient and effective for staging your Zebra Android KitKat and Jelly Bean devices — whether you need to configure a handful or hundreds of devices.

## STAGENOW — THE FAST AND EASY WAY TO AUTOMATE AND ERROR-PROOF STAGING OF YOUR ZEBRA ANDROID-BASED MOBILE DEVICES.

FOR MORE INFORMATION, VISIT [WWW.ZEBRA.COM/STAGENOW](http://WWW.ZEBRA.COM/STAGENOW) OR ACCESS OUR GLOBAL CONTACT DIRECTORY AT [WWW.ZEBRA.COM/CONTACTUS](http://WWW.ZEBRA.COM/CONTACTUS)

## SPECIFICATIONS

### Supported Platforms

Workstation Tool Windows 7 and newer

### Supported Devices

Please visit [www.zebra.com/stagenow](http://www.zebra.com/stagenow) for the latest list of compatible devices.

### Mobile Device Client

The StageNow V2 Staging solution offers out-of-the-box support on Android KitKat and Jelly Bean devices.

Zebra Android KitKat devices will begin shipping with the StageNow V2 Client in 2015.

Zebra KitKat and Jelly Bean Android devices that do not ship with the StageNow V2 Client will ship with the Rapid Deployment (RD) Client, which can be used to scan your StageNow bar codes. (Note that some of the device configuration options may not be supported. Please reference StageNow documentation for more details.)

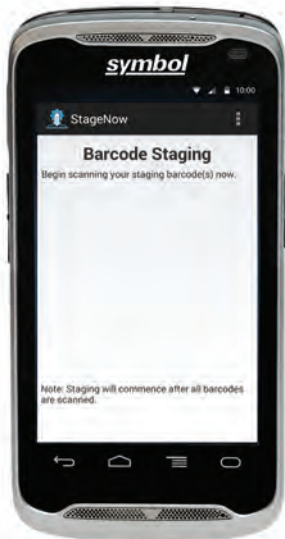
### Software Capabilities

Software capabilities include: Creating, managing, sharing and reading Staging Profiles that can perform OS updates, Wipe Device, Manage Applications, Enrolling in an MDM, Managing Device Security including Bluetooth, WWAN, GPS, NFC, File System Controls, Camera Controls, Threat Controls, Settings UI and Application Controls using barcode scanning or NFC tag reading.

### Technologies

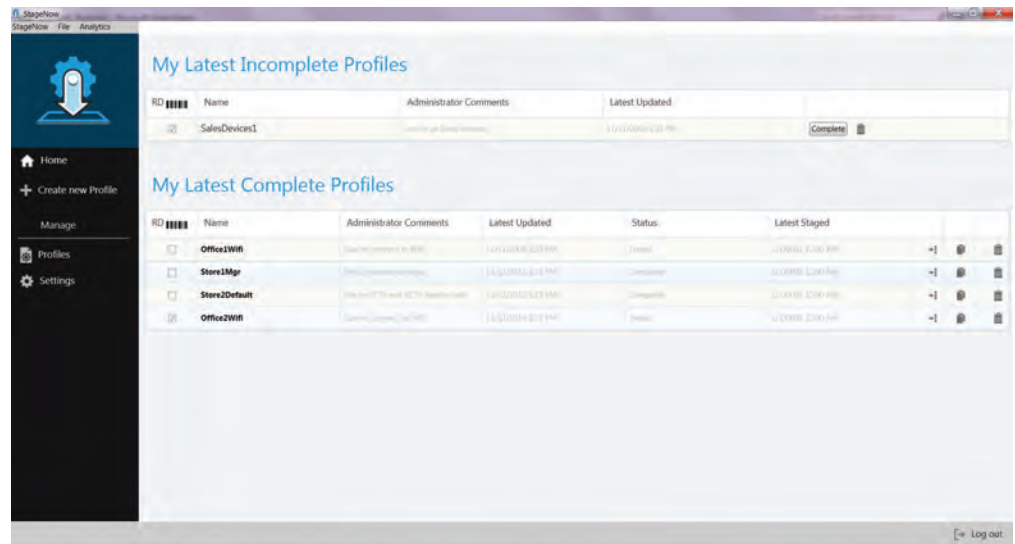
Built on Zebra's Mobility Extension (Mx)

## StageNow software screens\*



With StageNow, you can simply scan your bar code to configure your device.

\* Software screens subject to change.



Create your Profiles with StageNow's easy to use Wizards and manage them from one central location.

